

885137

2.4GHz Wi-Fi / BT / LTE Coexistence BAW Diplexer



1.7x1.3mm

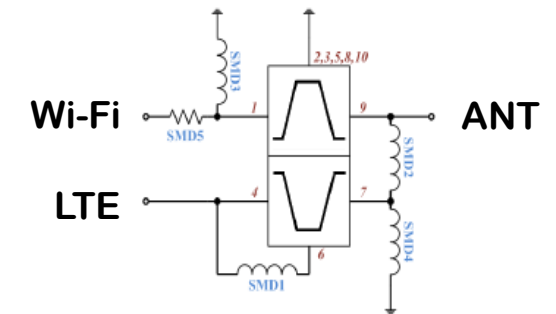
Product Features

- Diplexer formed with Wi-Fi bandpass and bandstop filters
- High-performance BAW rejection in adjacent LTE B38 / B40 / B7 / B41
- LowDrift™ BAW extended temp range: -40 to +95°C
- Usable bandwidth of 79MHz (CH1-13)

Applications

- LTE / Wi-Fi gateways, data cards and routers
- Wi-Fi antenna extractor circuits
- High-power WLAN access points and small cells
- 2.4GHz ISM applications
- Wi-Fi set top box, gateways and routers

Part	ANT – LTE (Bandstop) Insertion Loss			ANT – Wi-Fi (Bandpass) Insertion Loss		
	2370-2377.5MHz (dB)	Wi-Fi CH1-13 (dB)	2496-2510MHz (dB)	2300-2370MHz (dB)	Wi-Fi CH1-13 (dB)	2496-2510MHz (dB)
885137	2.5	20	2.0	48	1.8	25



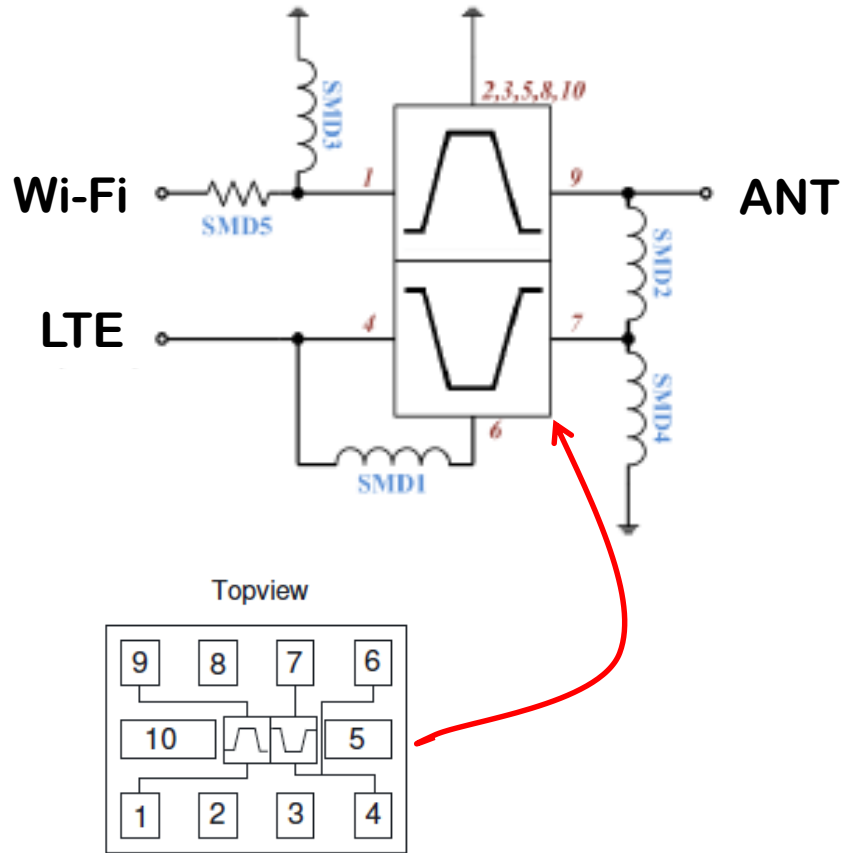
Ordering Information:

SAP #	Description
1124346	885137
1124349	885137-EVB Evaluation Board Sample

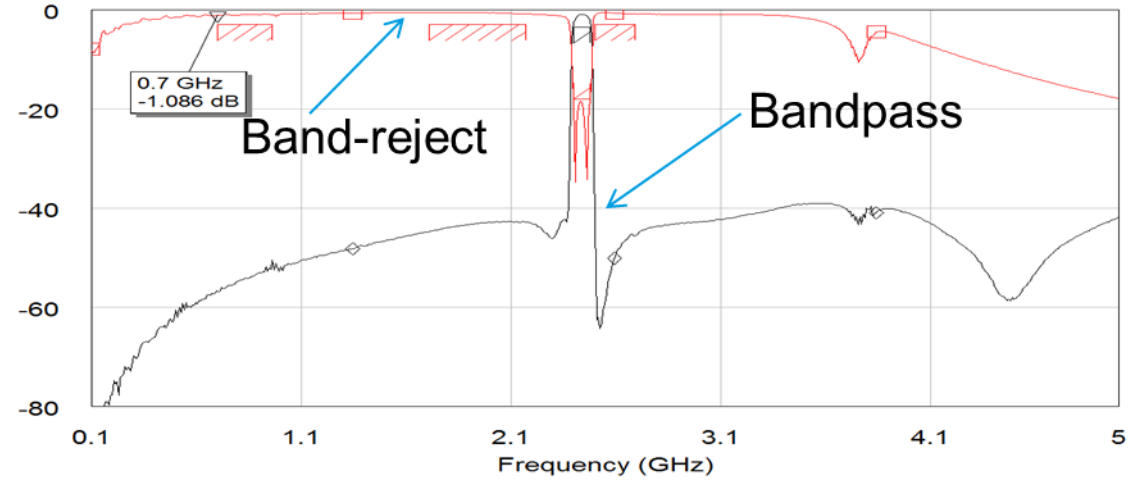


885137

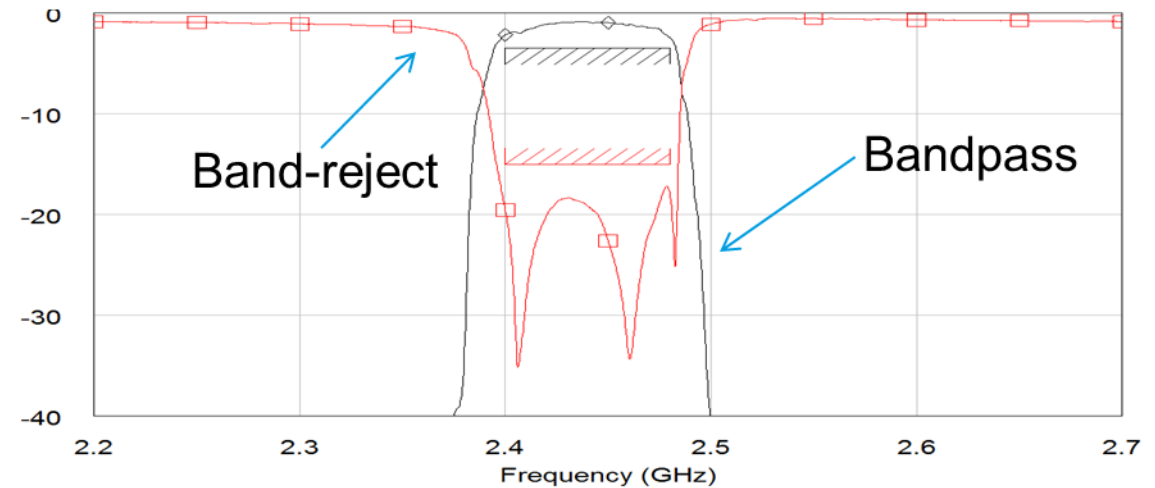
Performance Plots



Insertion Loss – Wide Band

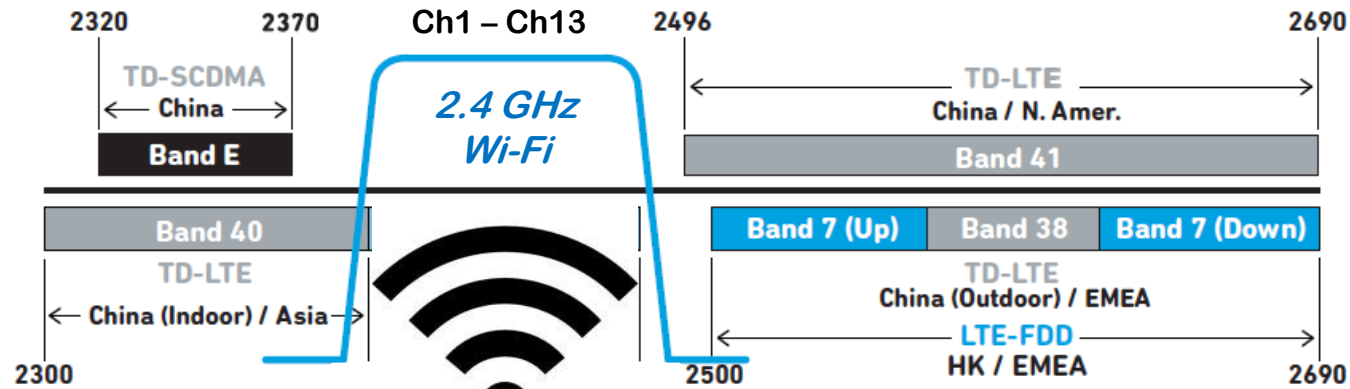


Insertion Loss – Narrow Band



BAW Solves High-Frequency Interference Problems

Coexistence Filtering



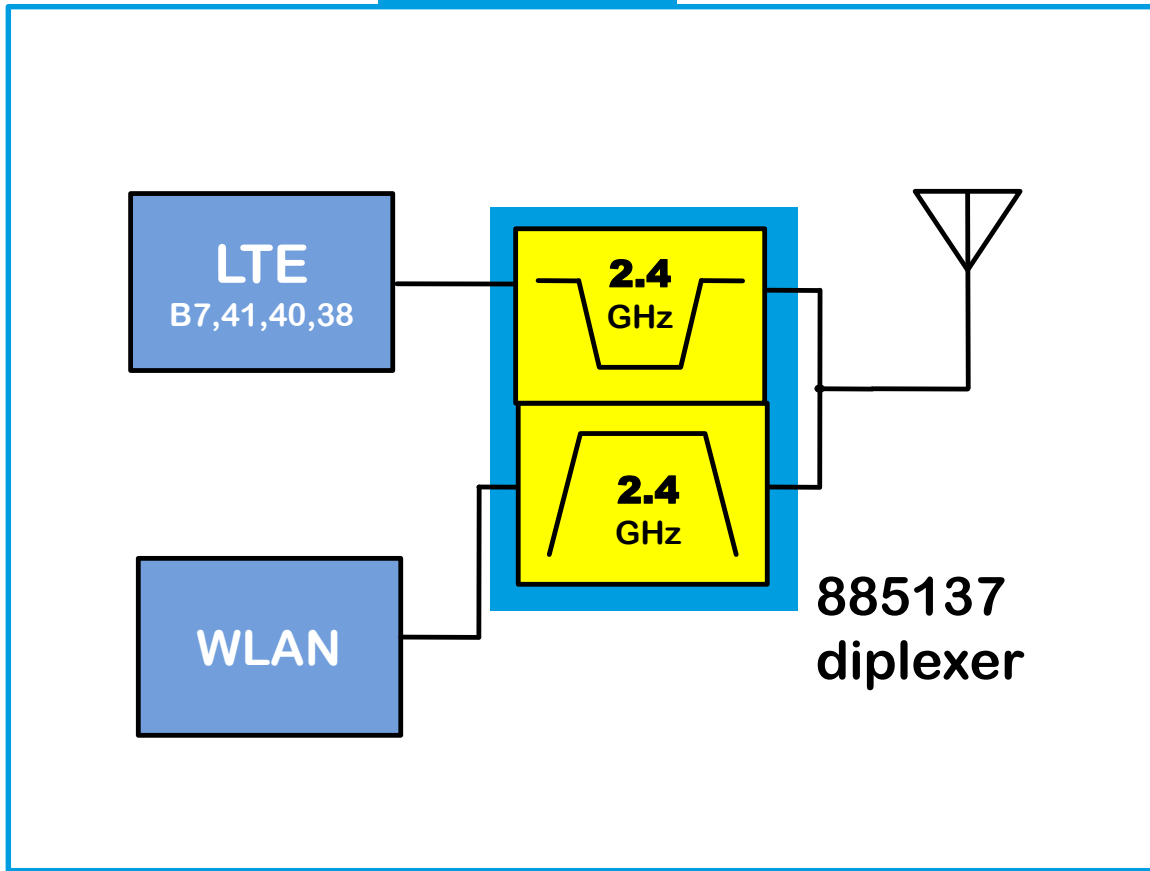
Wi-Fi BAW filters for indoor/outdoor access points, LTE gateways, and small cell base stations



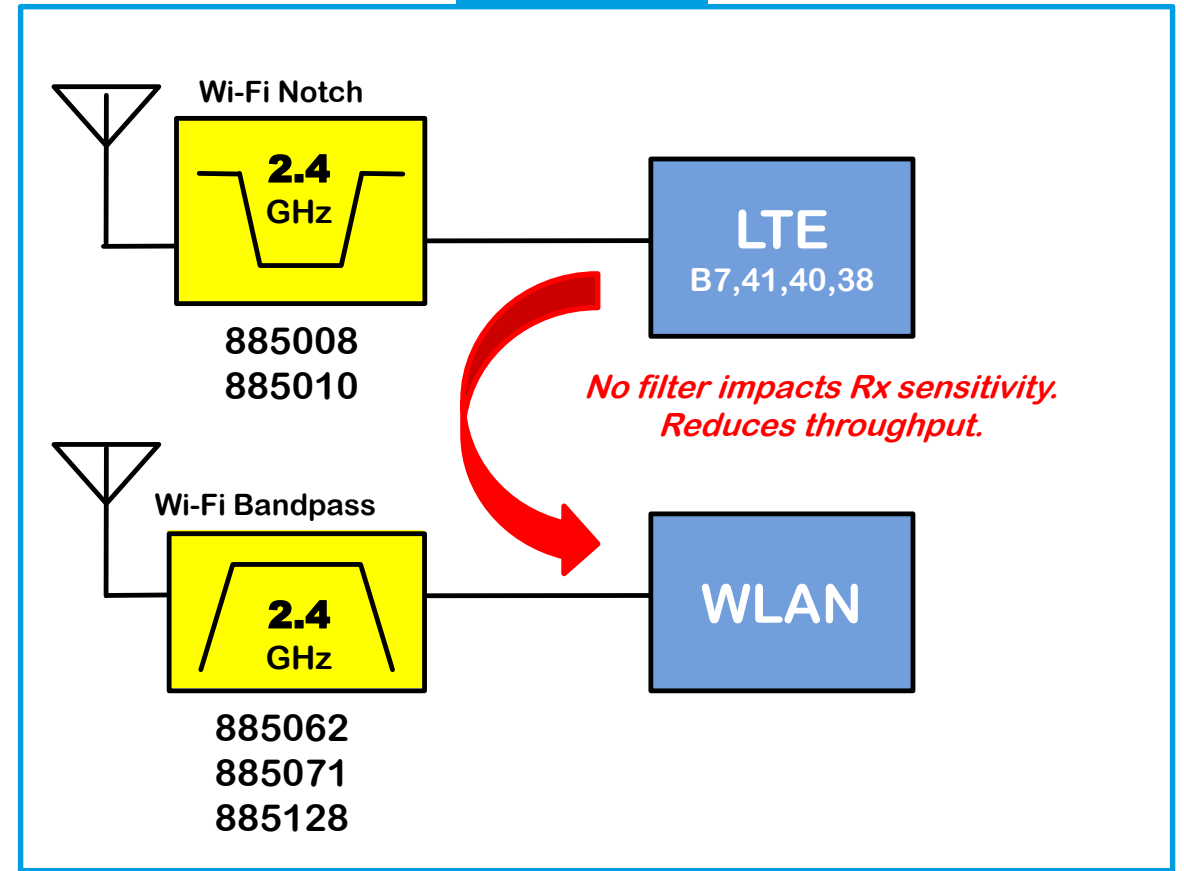
Wi-Fi / LTE Coexistence Models

Filter Use Cases

Integrated



Discrete



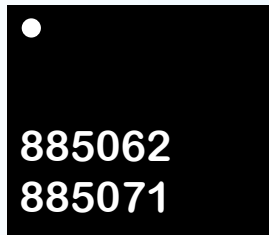
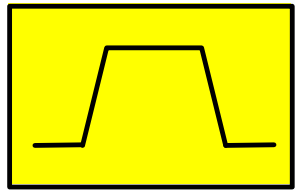
Use 885062 for best rejection in B38/B40 and 885071 for best rejection in B7/B41



Coexistence Filter Portfolio

Indoor CPE, Outdoor AP and Small Cells

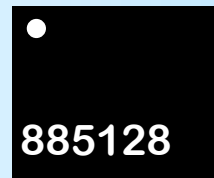
2.4GHz BPF
LTE Coexist



1.4 x 1.2 mm



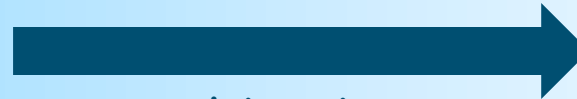
Industry
Smallest Package



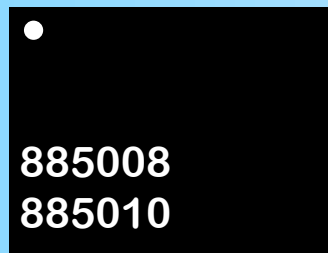
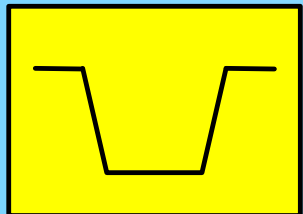
1.1 x 0.9 mm



+

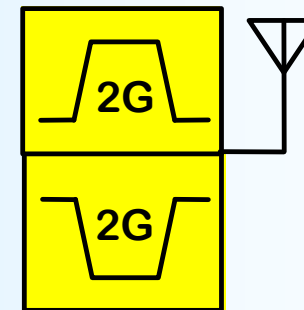


2.4GHz Notch
/ Bandstop

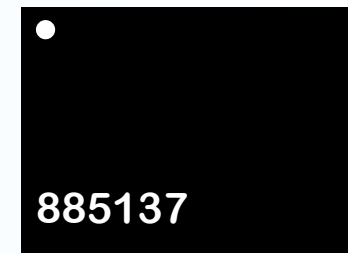


1.7 x 1.3 mm

2.4GHz ANT Diplexer



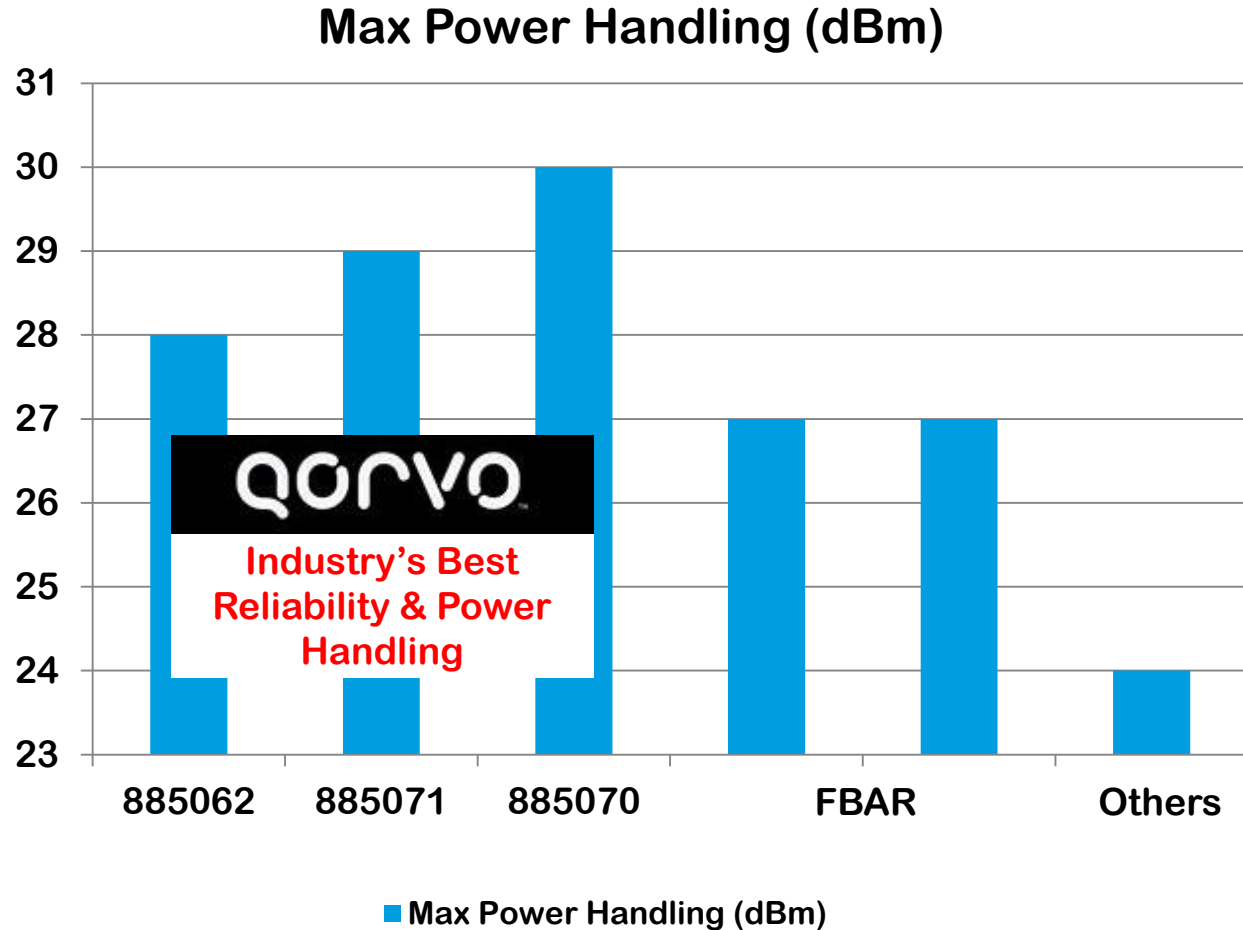
Wi-Fi Extractor



1.7 x 1.3 mm



Qorvo Connectivity Filters



Qorvo's Value Proposition

- ✓ 25% less temperature drift than FBAR
- ✓ Higher power handling than FBAR
- ✓ Hermetic packaging for best reliability and outdoor use
- ✓ Extended temperature range -40 to 95 °C
- ✓ Smaller size, lower cost and better performance than ceramic mono-block
- ✓ Superior insertion loss, selectivity and power handling compared to SAW
- ✓ MTTF: >1M hours

